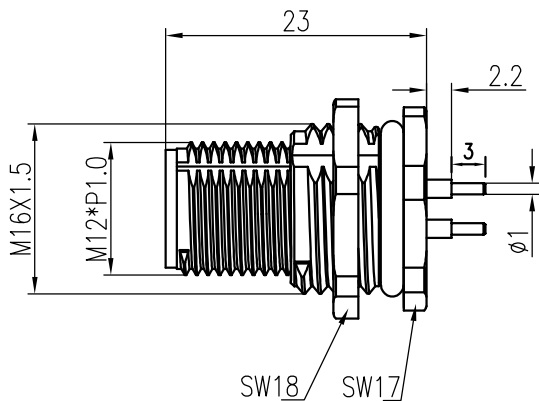


技术参数:

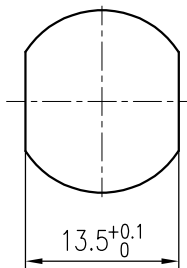
- 产品系列: M12 D-Code
- 插针数: 4
- 额定电流(40°C): 4 A
- 额定电压: 250 V
- 脉冲电压: 2500 V
- 污染等级: 3
- 过电压保护等级: II
- 接触电阻:  $\leq 10 \text{ m}\Omega$
- 绝缘电阻:  $\geq 100 \text{ M}\Omega$
- 锁紧方式: 螺纹M12X1
- 连接方式: PUR电缆(CAT.5)
- 线规: AWG22
- 防护等级: IP67
- 插拔次数: >100
- 使用温度范围:  $-20^\circ\text{C} - +60^\circ\text{C}$
- 插针材料: 铜合金
- 插针电镀材料: 金
- 插体材料: PA
- 外壳材料: 铸锌镀镍

Technical specification:

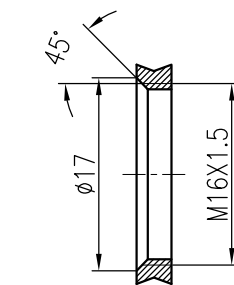
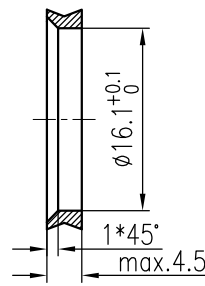
- Series: M12 D-Code
- Number of contacts: 4
- Rated current (40°C): 4 A
- Rated voltage: 250 V
- Rated impulse voltage: 2500 V
- Pollution degree: 3
- Overvoltage category : II
- Contact resistance:  $\leq 10 \text{ m}\Omega$
- Insulation resistance:  $\geq 100 \text{ M}\Omega$
- Connectoe locking system: Screw M12x1
- Cable type: PUR halogen-free, Shielded(CAT.5)
- Wire gauge: AWG22
- Degree of protection: IP67
- Mating cycles: >100
- temperature range:  $-20^\circ\text{C} - +60^\circ\text{C}$
- Material of contact: copper alloy
- Contact plating: AU
- Material of Insert: PA
- Material of housing: zinc diecasting nickel plated



带线长度L=0.5m, 如需其它长度在型号后+“-1.0”、“-2.0”  
 Cable length L=0.2m, For other lengths please add “-1.0”、“-2.0”after the type



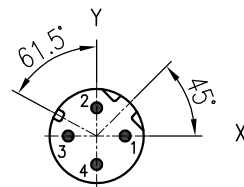
通孔安装  
 With bore hole



螺纹安装  
 With thread to screw in

面板安装尺寸  
 Panel Cut-out

针位图  
 Contact arrangement



| 针位图 pin position |       |       | 带电线颜色      |
|------------------|-------|-------|------------|
| 序号NO.            | X     | Y     | Wire color |
| 1                | 2.50  | 0.00  | 黄色 yellow  |
| 2                | 0.00  | 2.50  | 白色 white   |
| 3                | -2.50 | 0.00  | 橙色 orange  |
| 4                | 0.00  | -2.50 | 蓝色 blue    |

|               |              |                  |           |                 |            |                |           |   |              |   |                   |                    |               |
|---------------|--------------|------------------|-----------|-----------------|------------|----------------|-----------|---|--------------|---|-------------------|--------------------|---------------|
|               |              |                  |           |                 |            | 表面处理<br>Finish |           | -   |              | 图号<br>Drawing No.                           |                   | -                  |               |
|               |              |                  |           |                 |            | 材料<br>Material |           | -   |              | 产品代号<br>Part Code                           |                   | M12-M04D-BKR-M16-D |               |
| 标记<br>Mark    | 处数<br>Number | 变更描述/Description |           | 签名<br>Signature | 日期<br>Date | 比例<br>Scale    |           | 版本<br>REV.                                    | 重量<br>Weight | 数量<br>Qty.                                  | 产品料号<br>Part No.  |                    | 1630043141008 |
| 绘图<br>Drawn   | CH CHEN      | 姓名/Name          | 日期/Date   | 姓名/Name         | 日期/Date    | 3:2            | V1.1      | 44g   | -            | 产品名称<br>Part Name                           |                   | -                  |               |
| 审核<br>Checked | ZM LIN       | 日期/Date          | 18.8.2016 | 姓名/Name         | 日期/Date    | 3:2            |           | V1.1  | 44g          | -   | 产品名称<br>Part Name |                    | -             |
| 工艺<br>Process | -            | 日期/Date          | -         | 姓名/Name         | 日期/Date    | 3:2            |           | V1.1  | 44g          | -   | 产品名称<br>Part Name |                    | -             |
|               |              |                  |           | 批准<br>Approved  |            | YY LUO         | 18.8.2016 | All Dimensions in mm<br>Original Size DIN A 4 |              | 厦门唯恩电气有限公司<br>XIAMEN WAIN ELECTRICAL CO.LTD |                   |                    |               |