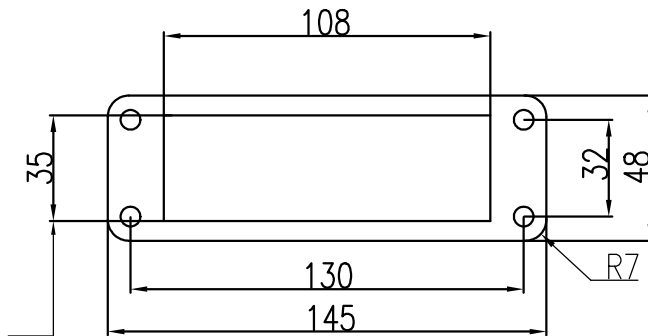


配套HC650插芯使用时此开孔宽度为45mm,配套HC250插芯使用此开孔宽度为40mm,  
Match with insert HC650, the distance between the two openings is 45mm,  
match with insert HC250, the distance between the two openings is 40mm.



面板开孔图  
Panel cut out

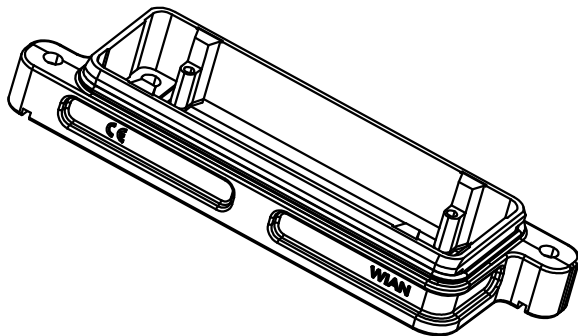
Note: 1 配套额定电流为650A的插芯 (HC650-M,HC650-F,HC650-MC,HC650-FC) 时,该开孔尺寸宽度为45mm,  
若面板强度足够,能保证产品安装时,面板不会出现变形,适配其他规格的插芯时,该开孔宽度亦可采用45mm.  
match with inserts with rated current 650A(HC650-M, HC650-F, HC650-MC, HC650-FC), and the  
distance between the two openings is 45 mm. If the panel is strong enough to avoid distortion during  
assembly, the distance between the two openings still could be 45 mm, when the shell matches with  
other inserts.




技术参数:

- 材料: 压铸铝
- 表面处理: 粉末喷涂
- 颜色: RAL 9005 (黑色)
- 温度范围: -40℃ - +125℃
- 防护等级: IP68/IP69K
- 出线方向: 底部出线
- 密封元件: NBR

Technical specification:

- Material: aluminium die-cast
- Surface: powder-coated
- Colour: RAL 9005(black)
- Temperature range: -40℃ - +125℃
- Degree of protection: IP68/IP69K
- Cable entry: bottom entry
- Hoods/Housings sealing: NBR



|               |              |                  |                |          |                 |   |            |   |            |  |               |
|---------------|--------------|------------------|----------------|----------|-----------------|---|------------|---|------------|--|---------------|
|               |              |                  |                |          |                 | 表面处理<br>Finish  |            | —   |            | 图号<br>Drawing No.  | —             |
|               |              |                  |                |          |                 | 材料<br>Material  |            | —   |            | 产品代号<br>Part Code  | HP24B/H-BK-2H |
| 标记<br>Mark    | 处数<br>Number | 变更描述/Description |                |          | 签名<br>Signature | 日期<br>Date  |            |   |            | 产品料号<br>Part No.   | 1136243201001 |
|               | 姓名/Name      | 日期/Date          |                | 姓名/Name  | 日期/Date         | 比例<br>Scale   | 版本<br>REV. | 重量<br>Weight                                  | 数量<br>Qty. | 产品名称<br>Part Name  | —             |
| 绘图<br>Drawn   | GQ WU        | 16.12.2023       | 标准化<br>Stand.  | —        | —               | 2:5   | V1.3       | 186g  | —          |  |               |
| 审核<br>Checked | Q GAO        | 16.12.2023       |                |          |                 |   |            |   |            |  |               |
| 工艺<br>Process | —            | —                | 批准<br>Approved | HQ ZHANG | 16.12.2023      |   |            | All Dimensions in mm<br>Original Size DIN A 4 |            |  厦门唯恩电气有限公司<br>XIAMEN WAIN ELECTRICAL CO., LTD. |               |