

Date

Drawing No.

1

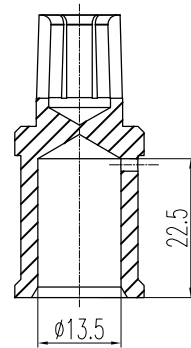
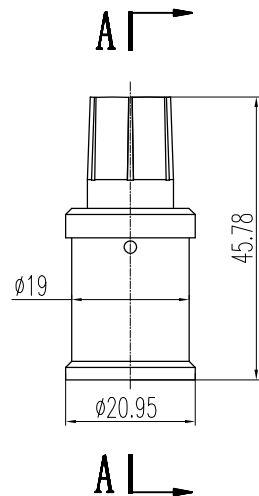
2

3

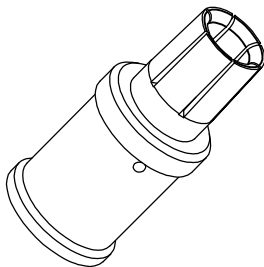
4

5

6



SECTION A-A



## 技术参数:

- 接线方式: 冷压连接
- 材料: 铜合金
- 表面处理: 镀银
- 接触电阻:  $\leq 0.3\text{m}\Omega$
- 线径范围:  $95\text{mm}^2$
- 工具:
  - 冷压钳: TL05
- 剥线长度: 22mm  
(当电缆绝缘层外径  $> 22\text{mm}$ , 剥线长度为  $29.5\text{mm}$ )

## Technical specification:

- Terminal: crimp terminal
- Material: copper alloy
- Surface: hard-silver plated
- Contact resistance:  $\leq 0.3\text{m}\Omega$
- Wire gauge:  $95\text{mm}^2$
- Tools:
  - Crimp contact tool: TL05
- Stripping length: 22mm  
(When the outer diameter of the cable insulation layer is greater than 22mm; Stripping length: 29.5mm)

						表面处理 Finish	-			图号 Drawing No.	-
						材料 Material	-			产品代号 Part Code	CHSF300-95
标记 Mark	次数 Number	变更描述/Description			签名 Signature	日期 Date	比例 Scale	版本 REV.	重量 Weight	数量 Qty.	产品料号 Part No.
		姓名/Name	日期/Date		姓名/Name	日期/Date	1:1	V1.0	51.86g	-	1010411202050
绘图 Drawn		PH CHEN	10.01.2023	标准化 Stand.							产品名称 Part Name
审核 Checked		HZ LAN	10.01.2023								-
工艺 Process				批准 Approved	HQ ZHANG	10.01.2023			All Dimensions in mm Original Size DIN A 4		厦门唯恩电气有限公司 XIAMEN WAIN ELECTRICAL CO.LTD