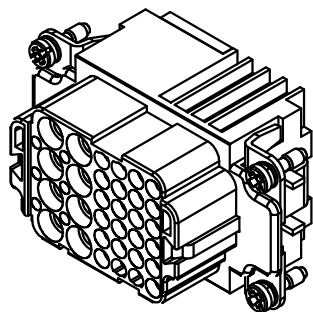
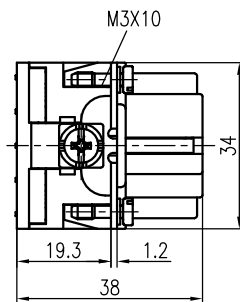
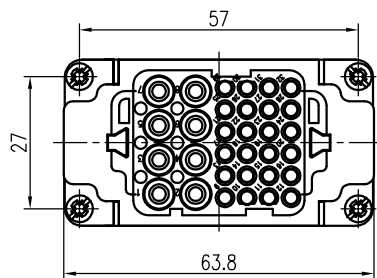


日期/Date

档案员  
Filing Clerk

## 技术参数:

## 插芯:

- 插针数: 8/24+PE
- 额定电流:
  - 电力区: 16A
  - 信号区: 10A
- 额定电压:
  - 电力区: 400V
  - 信号区: 250V
- 额定脉冲电压:
  - 电力区: 6kV
  - 信号区: 4kV
- 污染等级: 3
- 依据UL/CSA的额定电压: 600V/300V
- 绝缘阻抗:  $\geq 10^{10}\Omega$
- 材料: 聚碳酸酯
- 颜色: RAL 7032 (浅灰色)
- 温度范围:  $-40^{\circ}\text{C} - +125^{\circ}\text{C}$
- 依据UL 94的阻燃等级: V0
- 可插拔次数:  $\geq 500$

## 插针:

- 接线方式: 冷压连接
- 材料: 铜合金
- 表面处理:
  - 镀银
  - 镀金
- 接触电阻:
  - 强电针:  $\leq 1\text{m}\Omega$
  - 信号针:  $\leq 3\text{m}\Omega$
- 线径范围:
  - 强电针:  $0.5-4\text{mm}^2$ (20-12 AWG)
  - 信号针:  $0.14-2.5\text{mm}^2$ (25-14 AWG)
- 工具:
  - 冷压钳:
    - TL02G( $0.14-4\text{mm}^2$ )
    - TL02( $0.14-0.37\text{mm}^2$ )
  - 退针器:
    - TL00(10A冷压针)

十字螺钉起子,规格尺寸0是依据DIN 5260(16A冷压针)

## Technical specification:

## Insters:

- No. of contact: 8/24+PE
- Rated current:
  - Power area: 16A
  - Signal area: 10A
- Rated voltage:
  - Power area: 400V
  - Signal area: 250V
- Rated impulse voltage:
  - Power area: 6kV
  - Signal area: 4kV
- Pollution degree: 3
- Rated voltage acc.to UL/CSA: 600V/300V
- Insulation resistance:  $\geq 10^{10}\Omega$
- Material: polycarbonate
- Colour: RAL 7032(light grey)
- Temperature range:  $-40^{\circ}\text{C} - +125^{\circ}\text{C}$
- Flammability acc.to UL 94: V0
- Mating cycles:  $\geq 500$
- Contacts:
  - Terminal: crimp terminal
  - Material: copper alloy
  - Surface:
    - hard-silver plated
    - hard-gold plated
  - Contact resistance:
    - Power contacts:  $\leq 1\text{m}\Omega$
    - Signal contacts:  $\leq 3\text{m}\Omega$
  - Wire gauge:
    - Power contacts:  $0.5-4\text{mm}^2$ (20-12 AWG)
    - Signal contacts:  $0.14-2.5\text{mm}^2$ (26-14 AWG)
- Tools:
  - Crimp contact tool:
    - TL02G( $0.14-4\text{mm}^2$ )
    - TL02( $0.14-0.37\text{mm}^2$ )
  - Contact removal tool:
    - TL00(for crimp contacts 10A)

Cross-slotted screw driver,size 0 acc. to DIN 5260(for crimp contacts 16A)

						表面处理 Finish		-		图号 Drawing No.		-	
						材料 Material		-		产品代号 Part Code		HK-008/24-FC	
标记 Mark	处数 Number	变更描述/Description		签名 Signature	日期 Date	比例 Scale		版本 REV.	重量 Weight	数量 Qty.	产品料号 Part No.		1280320200001
绘图 Drawn	GQ.WU	姓名/Name	日期/Date	姓名/Name	日期/Date	2:3	V1.1	68.4g	-	产品名称 Part Name		-	
审核 Checked	Q.GAO	日期/Date	26.12.2022	日期/Date	26.12.2022	All Dimensions in mm Original Size DIN A 4							
工艺 Process	-	批准 Approved	HQ.ZHANG	日期/Date	26.12.2022			厦门唯恩电气有限公司 XIAMEN WAIN ELECTRICAL CO.LTD					