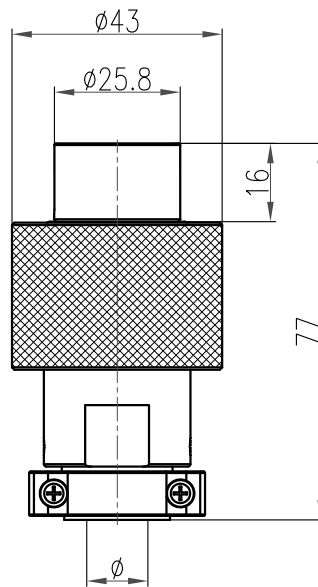


技术参数:

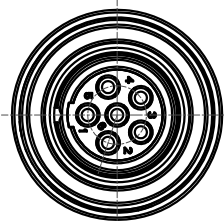
- 插针数: 6
- 额定电流: 25A
- 工作电压: 250V (AC)
- 耐电压: 2KV (AC)
- 绝缘电阻: $\geq 2000M\Omega$ (常态下)
- 接触电阻: $\leq 1m\Omega$
- 外壳材料: 铜合金镀镍
- 绝缘件: 热固性材料
- 密封件: 橡胶
- 振动: 10-2000Hz, $147m/s^2$, 瞬断 $\leq 1\mu s$
- 冲击: 加速度峰值 $490m/s^2$, 瞬断 $\leq 1\mu s$
- 机械寿命: ≥ 500
- 锁定方式: 螺纹锁定
- 线缆出线口直径: $\phi 12.5mm$
- 相对湿度: 90%-95% ($40^\circ C \pm 2^\circ C$ 时)
- 工作温度: $-40^\circ C \dots +105^\circ C$
- 防护等级: IP65

Technical specification:

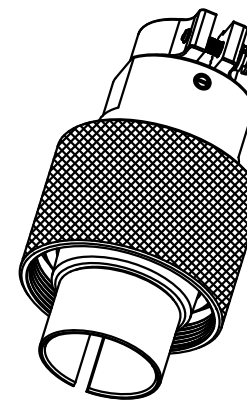
- Number of contacts: 6
- Rated current: 25A
- Rated voltage: 250V (AC)
- Rated impulse voltage: 2KV (AC)
- Insulation resistance: $\geq 2000 M\Omega$ (normal temperature)
- Contact resistance: $\leq 1 m\Omega$
- Material of housing: The copper alloy plating nickel
- Material of Insert: Thermosets
- Sealing element: Rubber
- Vibration: Frequency 10~2000Hz, accelerated speed $147m/s^2$, instant break $\leq 1\mu s$
- Shock: Accelerated speed $490m/s^2$, instant break $\leq 1\mu s$
- Mechanical working life: ≥ 500
- Connector locking system: Thread locking
- Cable and outlet diameter: $\phi 12.5mm$
- Relative humidity: 90%~95% ($40^\circ C \pm 2^\circ C$)
- Working temperature: $-40^\circ C \dots +105^\circ C$
- Pollution degree: IP65



电缆出口直径: $\phi 12.5$
 Cable outlet: $\phi 12.5$



冷压针需另外订购
 order crimp contacts separately



						表面处理 Finish	-		图号 Drawing No.	-	
						材料 Material	-		产品代号 Part Code	HY-T3006-S01E1-GMC	
标记 Mark	处数 Number	变更描述/Description		签名 Signature	日期 Date		比例 Scale	版本 REV.	重量 Weight	数量 Qty.	
	姓名/Name	日期/Date		姓名/Name	日期/Date	产品料号 Part No.					1690064101001
绘图 Drawn	TC CHEN	01.08.2014	标准化 Stand.	-	-	产品名称 Part Name					-
审核 Checked	ZM LIN	01.08.2014									
工艺 Process	-	-	批准 Approved	YY LUO	01.08.2014	All Dimensions in mm Original Size DIN A 4		厦门唯恩电气有限公司 XIAMEN WAIN ELECTRICAL CO.LTD			